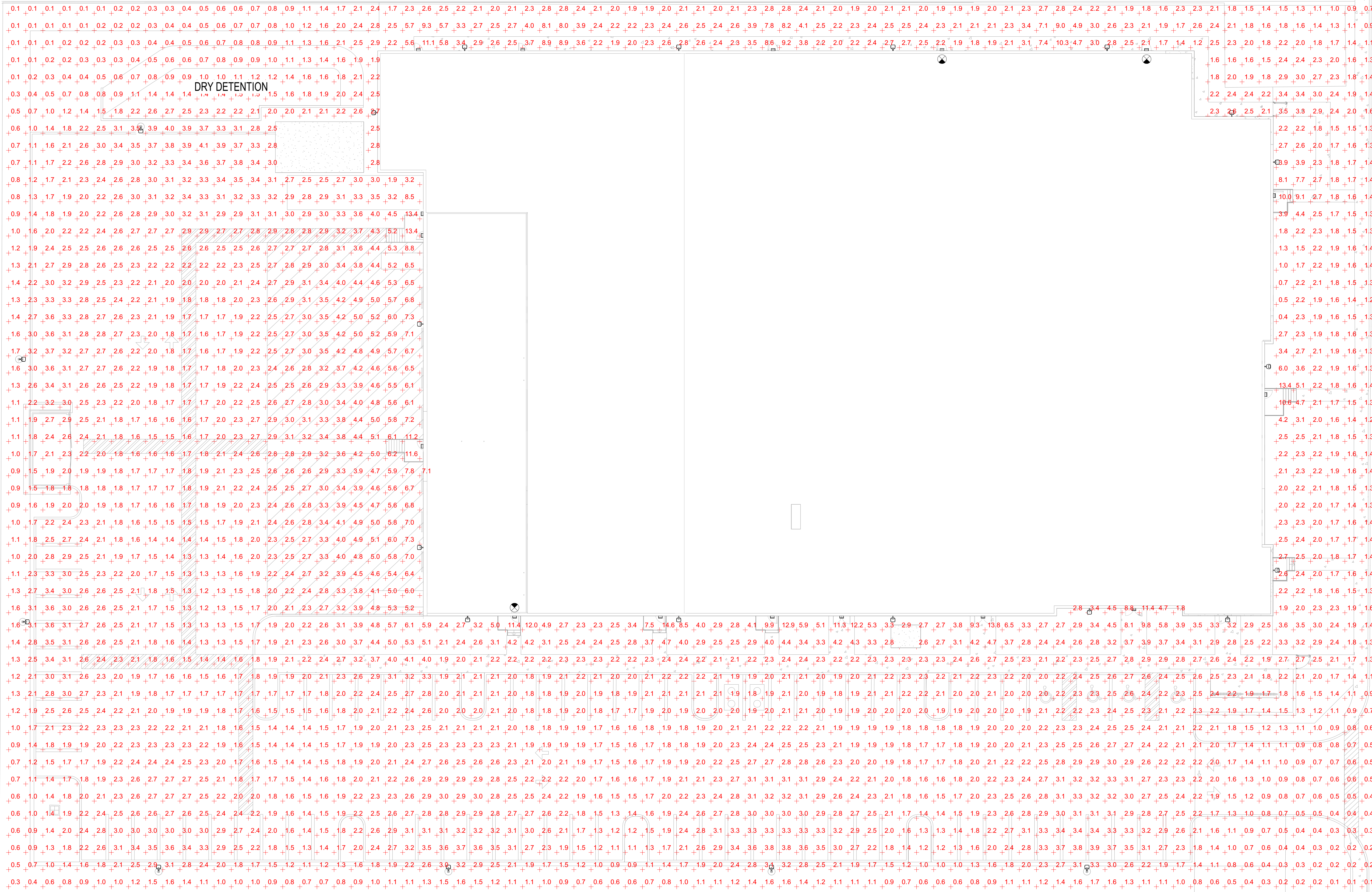


04.15.2024

SITE LIGHTING QUESTIONNAIRE

IS THE MAXIMUM FIXTURE HEIGHT 30'-0" AFG OR LESS?	YES
IS THE MINIMUM ILLUMINATION IN VEHICULAR USE AREAS 1 FOOTCANDLE OR MORE (5'-0" AFG AT VEHICULAR USE AREA EDGE PER 155.5401.E)?	YES
IS THE MAXIMUM ILLUMINATION AT THE PROPERTY LINE 3 FOOTCANDLES OR LESS (5'-0" AFG PER 155.5401.E)?	YES
ARE ALL FIXTURES FULL CUTOFF?	YES
WILL FIXTURES BE AUTOMATICALLY CONTROLLED BY PHOTOCELL AND/ OR TIMER ACUATION?	YES
IS A 15'-0" RADIUS MAINTAINED AROUND EACH LIGHT POLE?	YES



1 OVERALL (@ 0FT AFG)  
1/16" = 1'-0"

